

Retile[®]
magnetic tile display system

Retile[®]

magnetic tile display system



- Take down tile displays in minutes
- No hammering or tile breakage
- New tile position in minutes
- No adhesives required
- Minimise store down time
- Keeps shop area clean and available
- Grout as normal

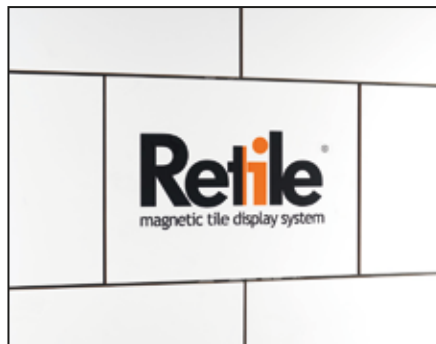
Up datable display system



Full room sets or feature walls



Easy to install



Retile the magnetic display system

1.



Start with a clean, flat substrate and seal it with a suitable primer and leave to dry.

2.



Take the Retile Attractive Panels, that are supplied in an easy to handle sheet size.

3.



Peel back the release liner a little and start to apply to the sealed substrate. Use the Retile Application Roller to apply pressure to the panel, ensuring no air bulbs.

Easy to install

4.



Take your chosen tile and ensure the back is free from dust and loose debris.

5.



The Retile Magnetic Panels are supplied pre-cut to your specified size. Peel back the release liner to expose the special high bond adhesive.

6.



Position the Retile Magnetic Panel over the tile back and apply pressure with the Retile Application Roller to ensure a solid bond.

7.



Use the Retile Magnetic Spirit Level to mark your starting position.

Easy to install

8.



Using the Retile Spirit Level as a stop, place your magnetised tile on to the wall and away you go.

9.



The Retile System is suitable for all tile sizes.

10.



The Retile Tool Kit also includes spacers so you can position the tiles with the desired gap for grouting.

11.



Once you have set your line and started, the tiles will go up in literally minutes.

Easy to install

12.



When you have tiled your area it is immediately ready for grouting.

13.



When you decide to refresh your displays, the tiles can be removed easily and once the wall is cleared of old grout, then the next tiles can go up.



It's that simple, that's Retile!